



Public Relations Group, Corporate Communications Unit
Akasaka Biz Tower, 5-3-1 Akasaka, Minato-ku, Tokyo 107-6332 JAPAN

July 12, 2017

INPEX to Pursue Gas Value Chain Business Development through Internal Reorganization

TOKYO, JAPAN - [INPEX CORPORATION](#) (INPEX) announced today that in line with the company's pursuit of the three growth targets(*) outlined in its Medium- to Long-Term Vision formulated in 2012, it will establish the Gas Business Development Unit within the Global Energy Marketing Division effective August 1, 2017 as part of a new initiative towards strengthening the company's gas marketing functions.

(*) The continuous enhancement of E&P activities, the strengthening of the company's gas supply chain and the reinforcement of renewable energy initiatives

Establishment of "Gas Business Development Unit"

- (1) INPEX is currently engaged in the strengthening of its gas supply chain that links the Ichthys LNG Project and other natural gas assets outside of Japan with the natural gas market in Japan. Going forward, INPEX will seek to strengthen its gas marketing functions also in Asia and elsewhere where demand for LNG and natural gas is expected to grow. The company will pursue a gas value chain business in these countries by leveraging its know-how and expertise across upstream, midstream and downstream gas businesses. Gas Business Development Unit will carry out these business developments.
- (2) The Gas Business Development Unit will be a subdivision of the Global Energy Marketing Division.
- (3) The reorganization is scheduled to be in effect on August 1, 2017.



Public Relations Group, Corporate Communications Unit
Akasaka Biz Tower, 5-3-1 Akasaka, Minato-ku, Tokyo 107-6332 JAPAN

(4) Appointment of General Manager, effective August 1, 2017.

Name	Current Title	New Title
Nobuyuki Higashi	Corporate Officer Vice President, Corporate Strategy & Planning	Corporate Officer Vice President, <u>Global Energy Marketing</u> Corporate Strategy & Planning
Atsunori Kozuki	Senior Coordinator, Gas Business Unit Global Energy Marketing Division	<u>General Manager,</u> <u>Gas Business Development</u> <u>Unit</u> Global Energy Marketing Division

ATTACHMENT: Organizational Chart

About INPEX

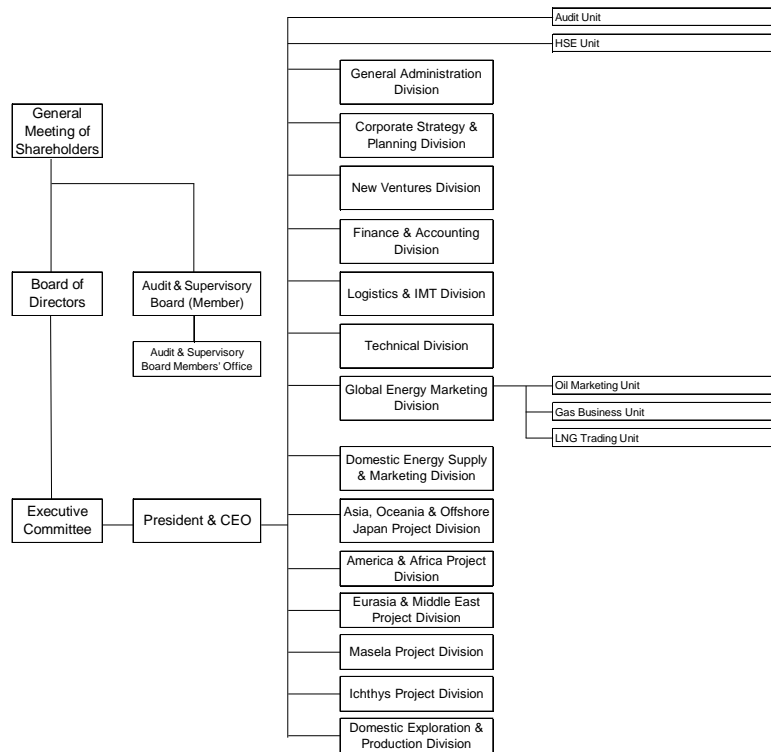
INPEX CORPORATION is Japan's largest exploration and production (E&P) company, and a mid-tier E&P player just behind the world's oil majors. INPEX is currently involved in approximately 70 projects across more than 20 countries, including the Ichthys LNG Project in Australia as Operator. Through sustainably growing its oil and gas development business, INPEX aims to become a top class international oil and gas E&P Company and continue providing a stable and efficient supply of energy to its customers. For more information, visit www.inpex.co.jp/english/index.html.

Media Contact: INPEX Tokyo Office, Public Relations Group, Tel) +81-3-5572-0233



Public Relations Group, Corporate Communications Unit
 Akasaka Biz Tower, 5-3-1 Akasaka, Minato-ku, Tokyo 107-6332 JAPAN

Current Organizational Chart



Organizational Chart as of August 1, 2017

