

25 June 2009

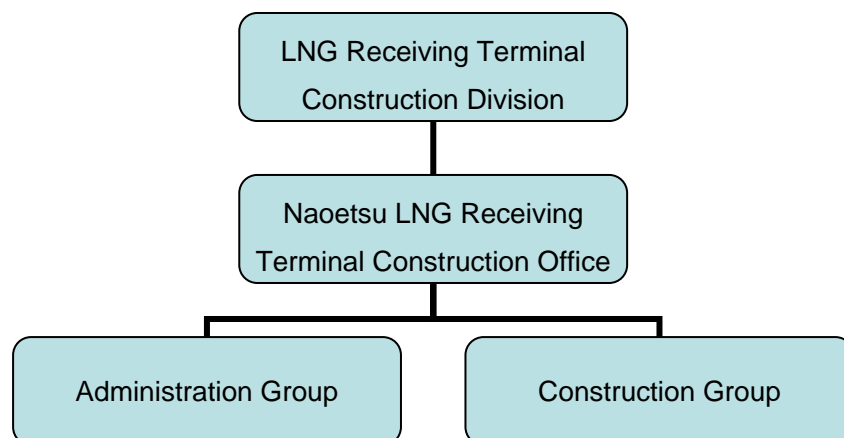
Establishment of LNG Receiving Terminal Construction Division

In July 2009, INPEX CORPORATION will start construction of a liquefied natural gas (LNG) receiving terminal at the port of Naoetsu in Joetsu City, Niigata Prefecture, Japan.

As of 25 June 2009, LNG Receiving Terminal Construction Division was newly established for overall project management, which replaces LNG Receiving Terminal Construction Department of Domestic Project Division, and Mr. Akinori Sakamoto, Managing Executive Officer, was appointed as Senior General Manager in charge of LNG Receiving Terminal Construction Division.

The Division's Naoetsu LNG Receiving Terminal Construction Office is located in Naoetsu.

<Organization Chart>



<Contact>

Naoetsu LNG Receiving Terminal Construction Office
Address: 12 Yachiho, Joetsu City, Niigata Prefecture 942-0027 Japan
Telephone: 81-25-545-2196 (From 30 June 2009)

Media Contact: INPEX Tokyo Office, Public Relations Group, Tel) +81-3-5572-0233