



Public Relations Group, Corporate Communications Unit
Akasaka Biz Tower, 5-3-1 Akasaka, Minato-ku, Tokyo 107-6332 JAPAN

December 9, 2015

INPEX Establishes Domestic Exploratory Drilling Operations Office

Tokyo, Japan - [INPEX CORPORATION](#) (INPEX) announced today it has established the Domestic Exploratory Drilling Operations Office (the Office) in order to smoothly and efficiently carry out the drilling project commissioned by the Agency of Natural Resources and Energy of the Ministry of Economy, Trade and Industry (METI) of Japan for the agency's "Heisei 26~28 Domestic Offshore Drilling Program in Japan", as [announced on July 30, 2015](#).

INPEX is currently undergoing preparation work ahead of the exploratory well drilling offshore Yamaguchi and Shimane prefectures scheduled to begin in May 2016. Going forward, the company will proceed with this preparation work with safety as its first priority, with the understanding and cooperation of the local community.

About the Office

1) Overview

An organizational change will be implemented through the establishment of the Office within the Domestic Project Division. (See attachment)

2) Organization

Office facilities will be set up in Hamada city, Shimane Prefecture. Key operations for this project will be handled by employees based in Hamada city, and a contingent based at the Tokyo head office will support these operations.

3) Objectives

The establishment of the Office as an independent entity is designed to demarcate the areas of responsibility concerning project implementation and facilitate communication and coordination with local authorities and other related parties and organizations.

4) Date of establishment

January 15, 2016 (Office facilities scheduled to open on April 1, 2016)

5) Key personnel appointment (as of January 15, 2016)

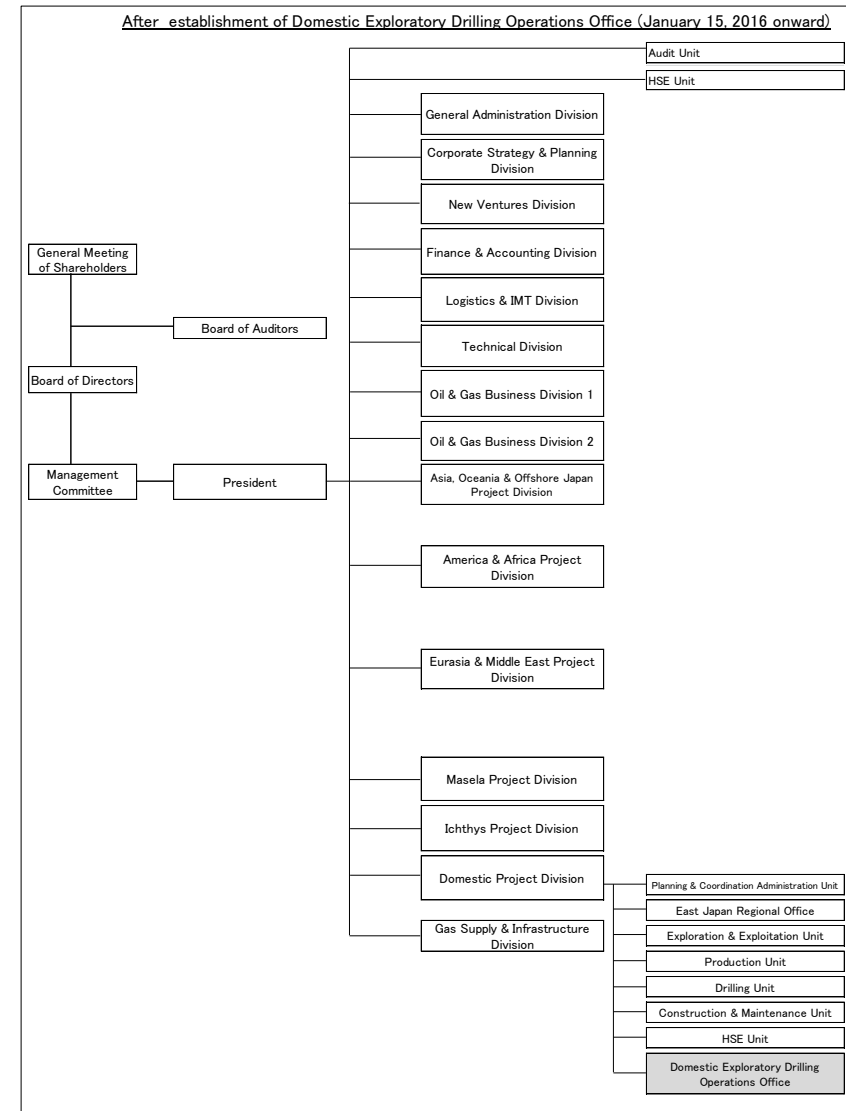
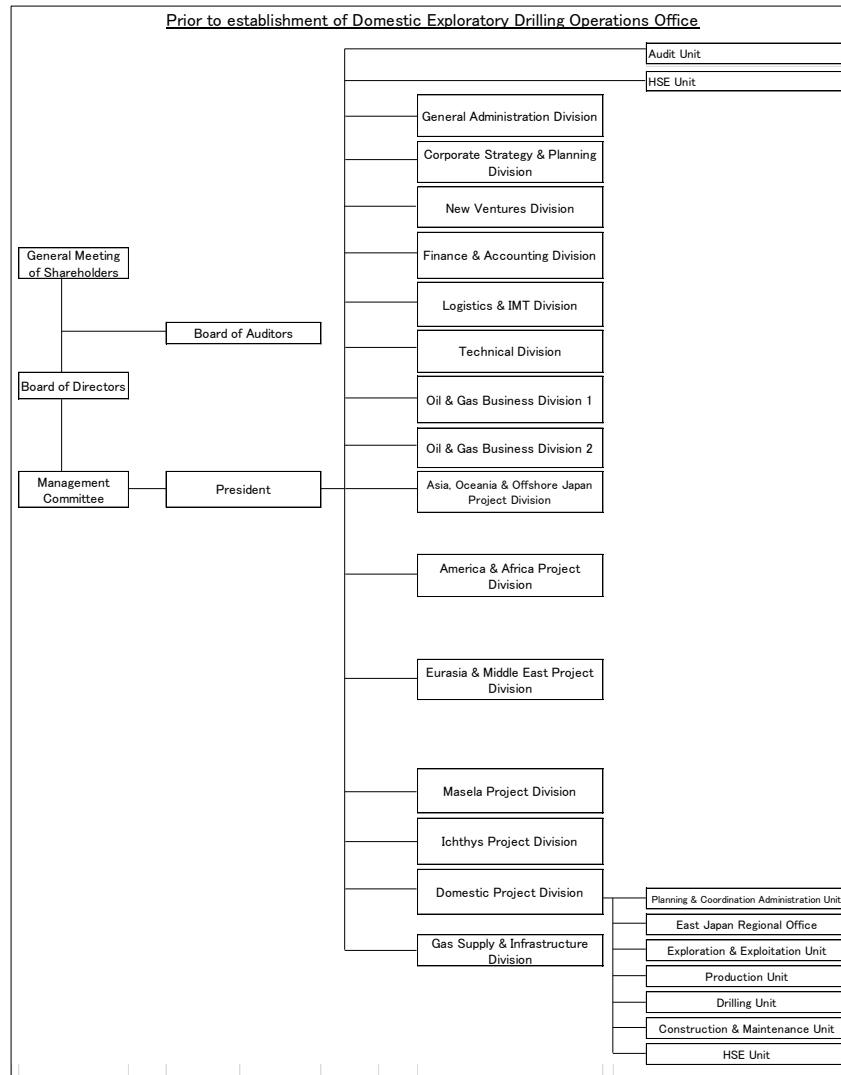
Name	Current Title	New Title
Toru Akutsu	Project General Manager, Domestic Project Division	<u>General Manager,</u> <u>Domestic Exploratory Drilling</u> <u>Operations Office</u> Domestic Project Division

About INPEX

INPEX CORPORATION is Japan's largest exploration and production (E&P) company, comparable in size and scope to other mid-tier international oil and gas E&P companies. INPEX is currently involved in over 70 projects across more than 20 countries, including two large-scale LNG Projects, the Ichthys LNG Project in Australia and the Abadi LNG Project in Indonesia, as operator. Through sustainably growing its oil and gas development business, INPEX aims to become a top class international oil and gas E&P company following the majors by the early 2020s. For more information, visit www.inpex.co.jp/english/index.html.

Media Contact: INPEX Tokyo Office, Public Relations Group, Tel) +81-3-5572-0233

ATTACHMENT



*Unit level listed for Domestic Project Division only